

Pregnant and Postpartum HUSKY Health Members with Substance Use Disorder and Infants Exposed to Substances

Substance Use Disorder Prevention that Promotes Opioid Recovery and Treatment (SUPPORT) for Patients and Communities Act, Section 1003



November 2025

Kimberly Haugabook, Cynthia Petronio-Vazquez, Kris Noam, Francis Echevarria, Paige Horton, Denise Perez, Mariel Vicente

Contents

- | | | | |
|----------|--|----------|---|
| 1 | Volume and Rate of HUSKY Health Births in CT | 2 | Pregnant and Postpartum Members with an SUD and Substance –Exposed Infants |
| 3 | SUD Diagnoses for Pregnant and Postpartum Members | 4 | Utilization of MOUD and Racial Disparities for Pregnant and Postpartum Members with Opioid Use Disorder |
| 5 | Infants Exposed to Substances, by CT Planning Region | 6 | Pregnant and Postpartum Members with an SUD, by CT Planning Region |
| 7 | SBIRT Assessment for Pregnant and Postpartum Members | 8 | Questions/Other |

Number of HUSKY Health Births in Connecticut

	CT*	CT HUSKY Health	% CT Births/ CT HUSKY Health
Births in 2023	34,568	15,095	43.7%
Births in 2024	34,607	14,847	43.0%

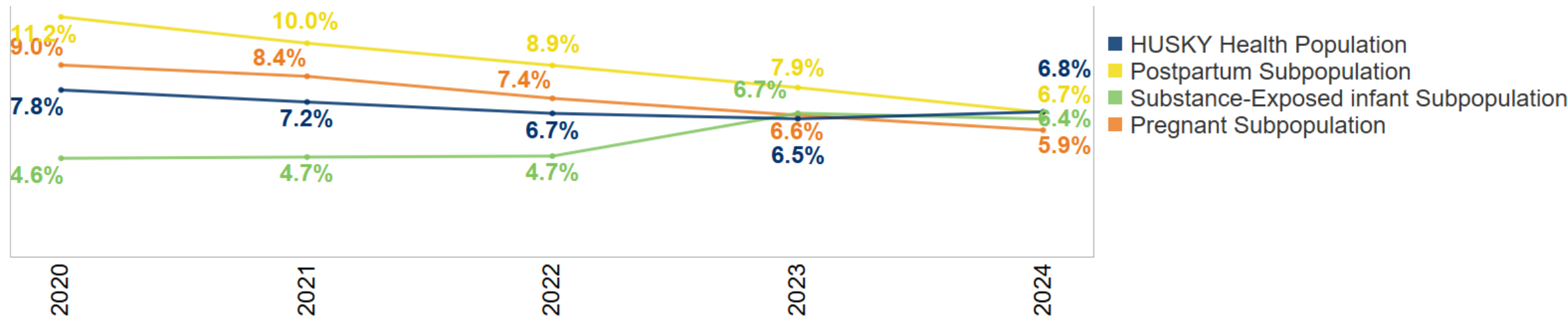
HUSKY Health members accounted for about 43% of all births in the state of Connecticut in 2023 and 2024.

Pregnant and Postpartum Members with an SUD and Substance-Exposed Infants

Pregnant/postpartum members newly diagnosed with a substance use disorder

	2020	2021	2022	2023	2024
HUSKY Health Population	1.6% (9,756 out of 598,902)	1.6% (10,855 out of 673,248)	1.5% (11,015 out of 715,101)	1.5% (10,920 out of 720,515)	1.5% (9,409 out of 617,748)
Postpartum Subpopulation	4.9% (151 out of 3,067)	4.8% (154 out of 3,255)	4.1% (134 out of 3,262)	3.7% (130 out of 3,482)	3.0% (103 out of 3,391)
Pregnant Subpopulation	3.5% (484 out of 13,639)	3.7% (539 out of 14,690)	3.3% (500 out of 15,327)	2.8% (467 out of 16,457)	2.5% (400 out of 15,953)

Percentage of pregnant/postpartum members with an SUD and infants exposed to substances

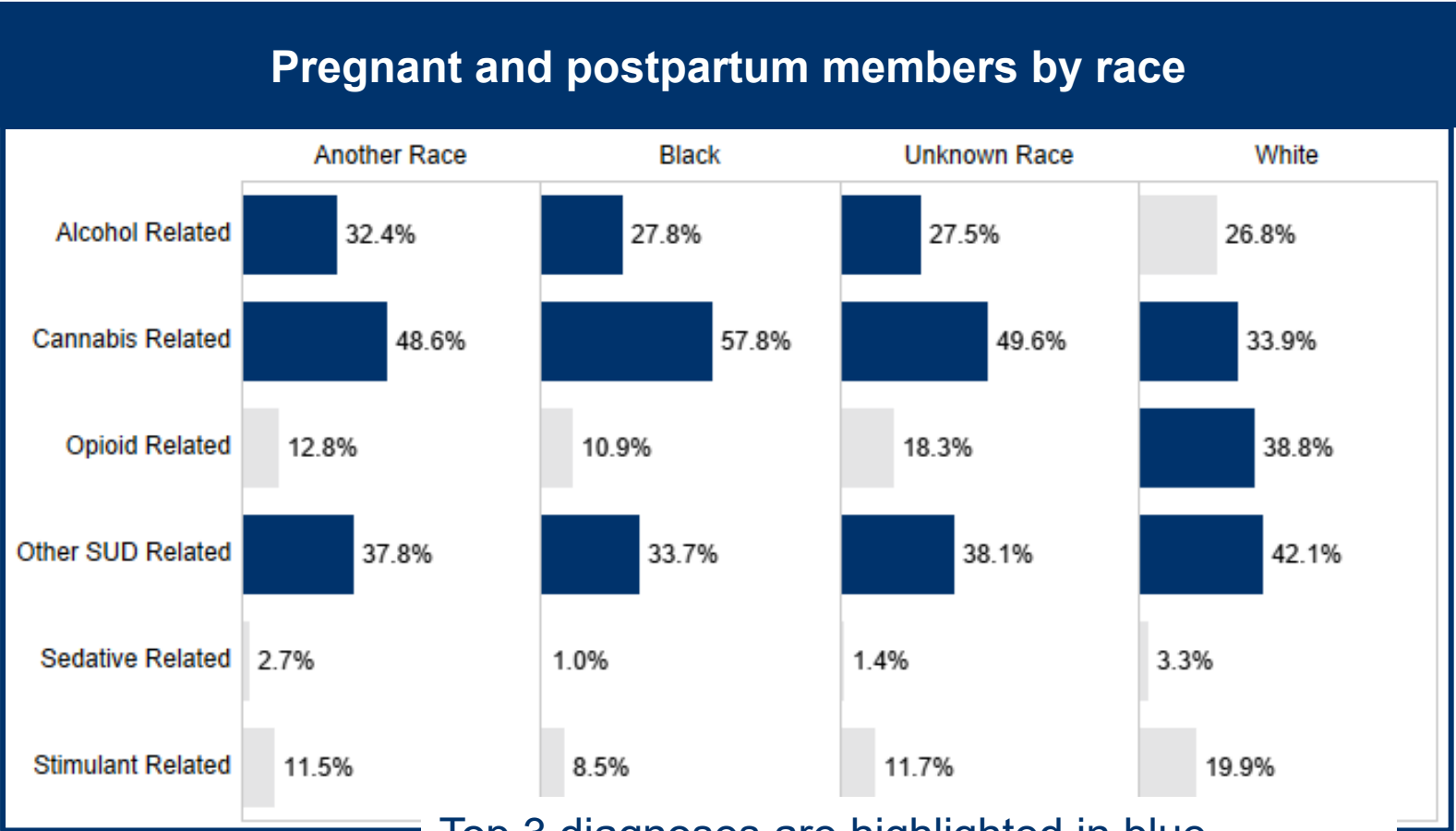


Please note: average rates were used to align with SUPPORT's quarterly diagnosis reporting

SUD Diagnosis Prevalence for Pregnant and Postpartum Members, CY 2024

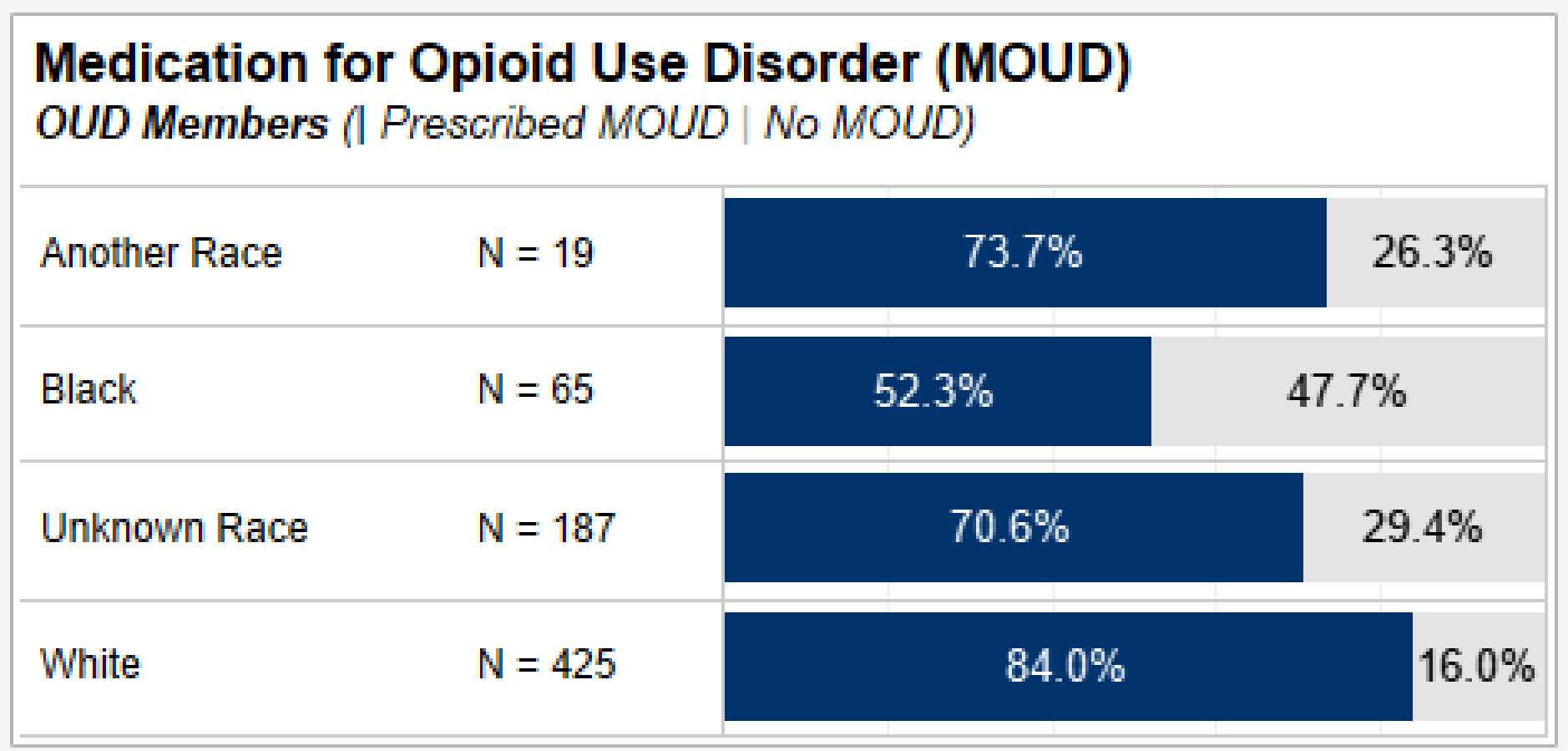
Number of pregnant/ postpartum members	Number of pregnant/ postpartum members with an SUD	Pregnant/postpartum members SUD prevalence rate
34,232	2,852	8.3%

All pregnant and postpartum members		
Diagnosis	Number of Members	
Alcohol Related	786	31.2%
Cannabis Related	1,290	45.3%
Opioid Related	694	24.8%
Other SUD Related	1,104	36.6%
Sedative Related	60	2.6%
Stimulant Related	404	16.7%



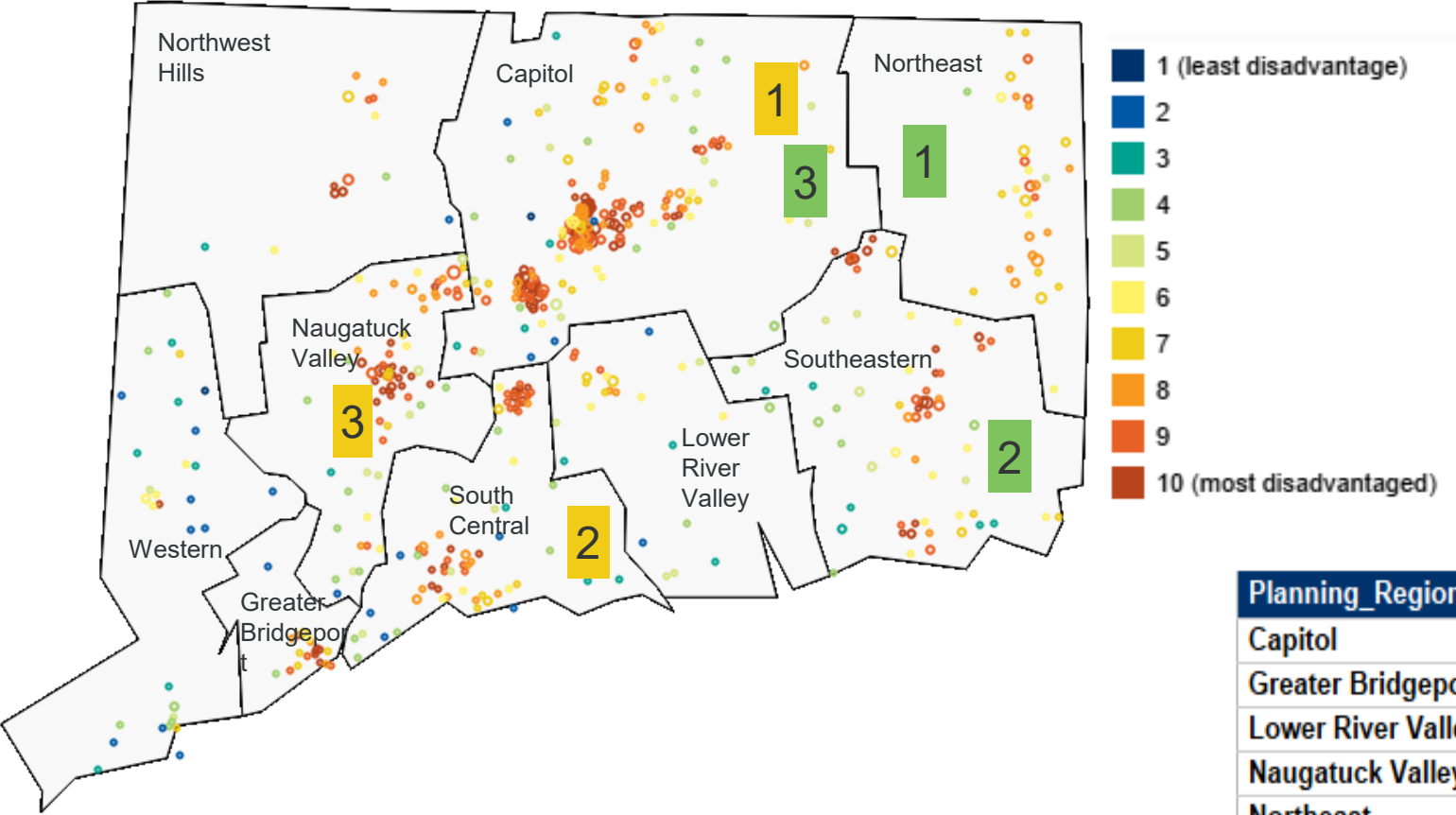
Top 3 diagnoses are highlighted in blue

Prevalence of MOUD Among Pregnant and Postpartum Members Diagnosed with Opioid Use Disorder According to Race, CY 2024



Infants Exposed to Substances by CT Planning Region, CY 2024

Infant members who had a substance-exposed diagnosis are shown by neighborhood area deprivation index (ADI score)



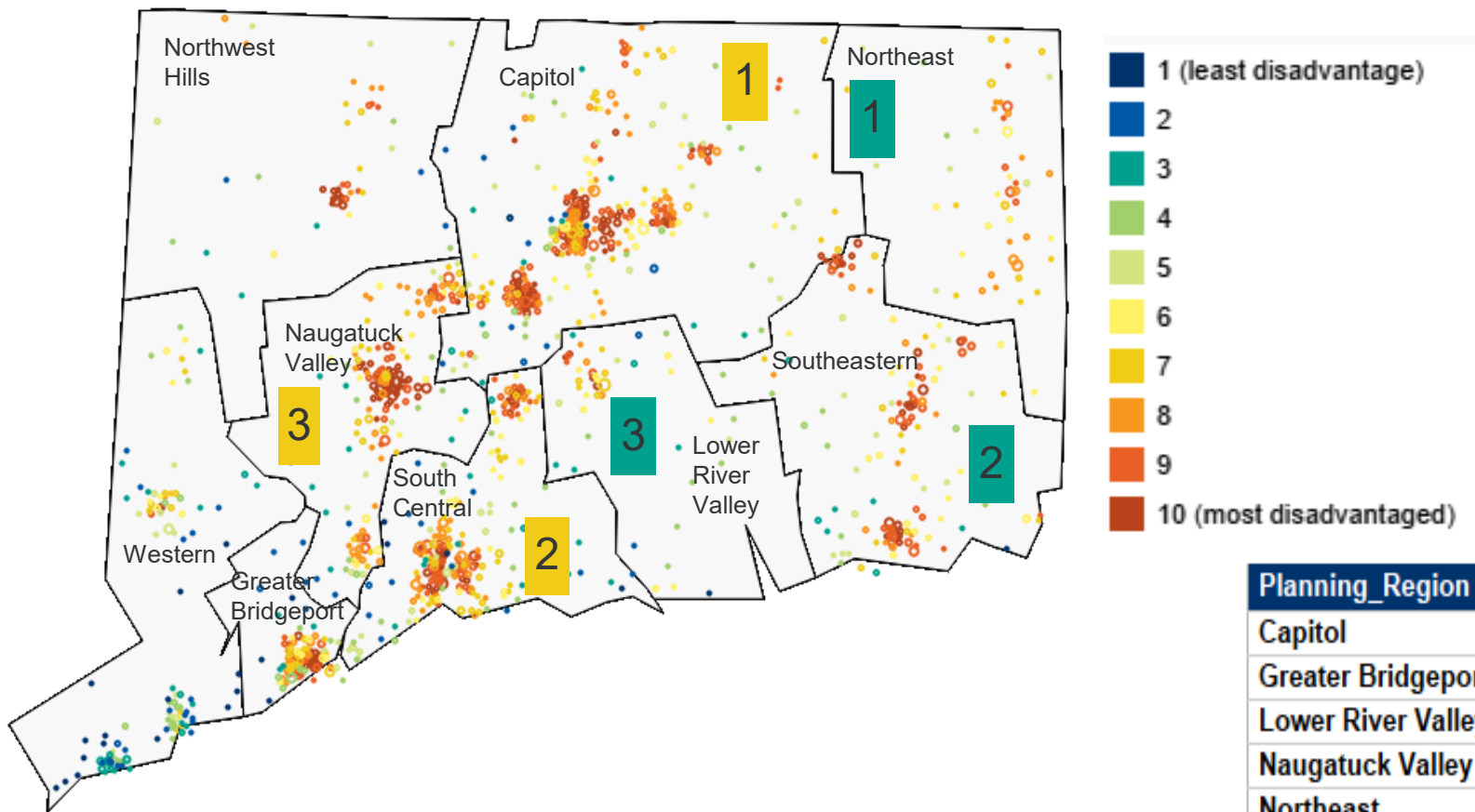
Planning regions with the largest number of infants

Planning regions with the highest prevalence rates

Planning_Region	Number of Infants	Number of SEI	SEI Prevalence Rate
Capitol	4,519	470	10.4%
Greater Bridgeport	2,077	24	1.2%
Lower River Valley	460	38	8.3%
Naugatuck Valley	2,585	134	5.2%
Northeast	352	85	24.1%
Northwest Hills	422	28	6.6%
South Central	2,737	89	3.3%
Southeastern	1,253	146	11.7%
Western	2,360	48	2.0%

Pregnant and Postpartum Members with an SUD by CT Planning Region, CY 2024

members who had an SUD diagnosis are shown by neighborhood ADI score



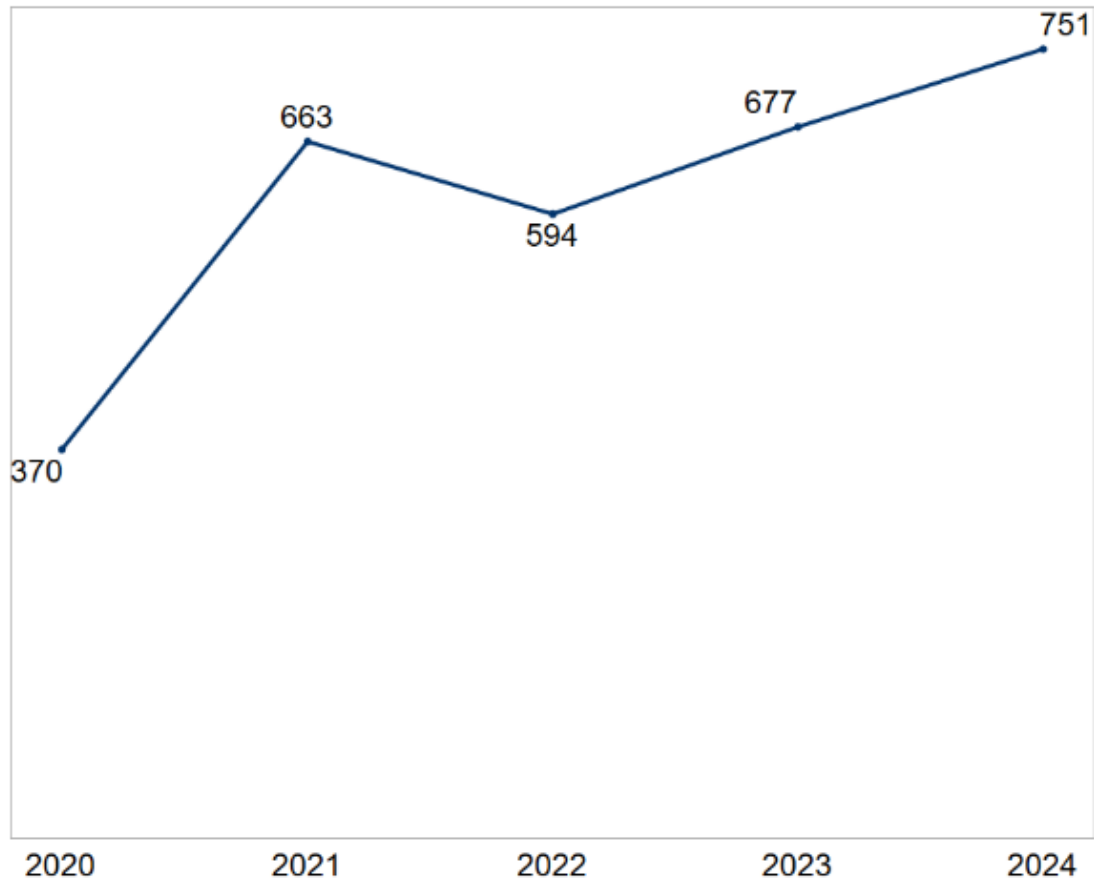
Planning regions with the largest number of infants

Planning regions with the highest prevalence rates

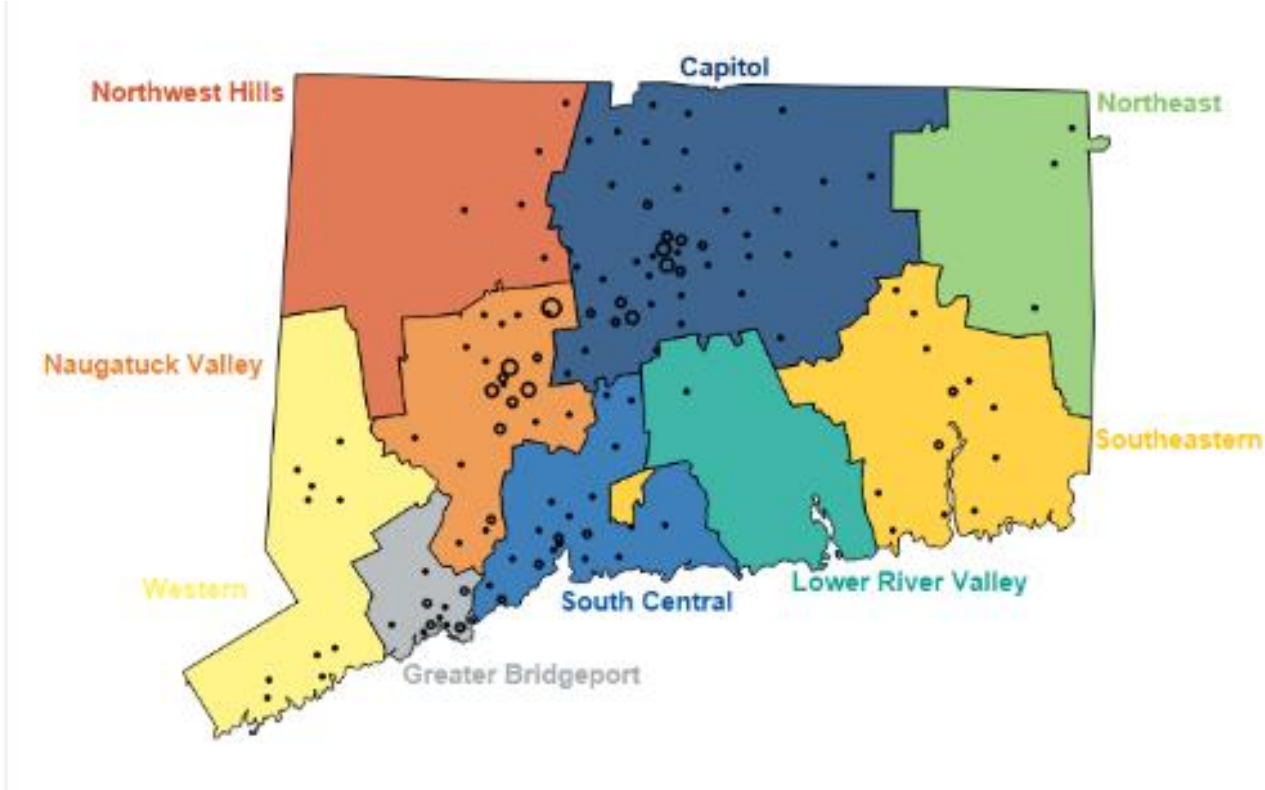
Planning_Region	PPW Members	PPW Members with SUD	SUD Prevalence Rate
Capitol	9,445	887	9.4%
Greater Bridgeport	4,317	233	5.4%
Lower River Valley	824	86	10.4%
Naugatuck Valley	5,171	400	7.7%
Northeast	627	115	18.3%
Northwest Hills	749	68	9.1%
South Central	5,782	547	9.5%
Southeastern	2,526	320	12.7%
Western	4,692	184	3.9%

SBIRT Episodes for Pregnant and Postpartum Members

Count SBIRT Episodes 2020-2024



Utilization of SBIRT Episodes by Planning Region



Thank You

Contact Us

 877-552-8247

 www.carelon.com | www.ctbhp.com

 Kimberly Haugabook, MPA, AVP Health Equity & Special Projects
Kimberly.Haugabook@carelon.com

Cynthia Petronio-Vazquez, MS, LPC, NCC, SUPPORT Statewide Network Manager
Cynthia.Petronio-Vazquez@carelon.com

Denise Perez, Senior Business Information Analyst
Denise.Perez@carelon.com